



Elettronica Progetti

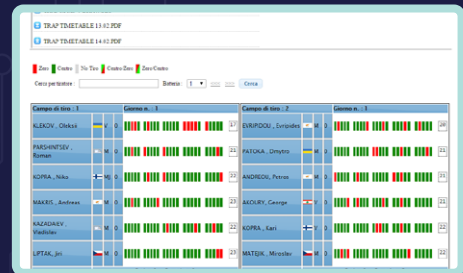
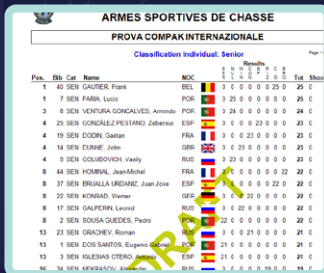
SHOOTING RANGE SOLUTIONS



RANGE AUTOMATION



DIGITAL SCORING

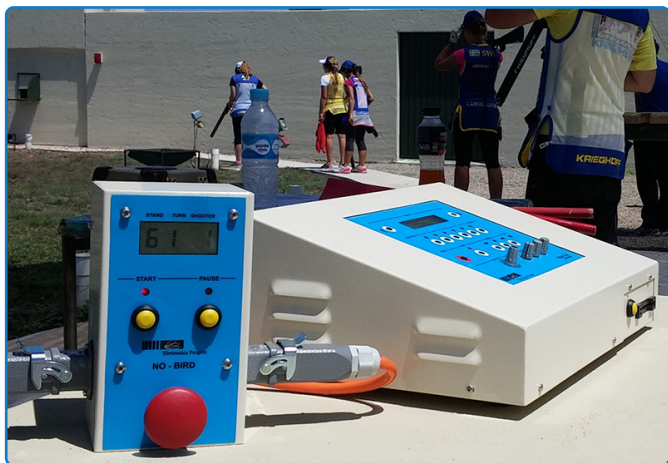


REAL-TIME SCORE BROADCASTING AND MONITORING

Multi-Pull

S Y S T E M

Multi-Pull had been used in
ATHENS 2004 - BEIJING 2008 - LONDON 2012 - RIO 2016 - TOKYO 2020



The EP095M-2022 is our flagship control unit for shooting ranges.

A sturdy metal casing, physical buttons and industrial grade connectors grant it long lasting life to this device.

It has been used in the last 4 Olympic Games and in countless National and International competitions.

Is very well known for being exceptionally fast in target release thanks to our patented voice circuit. It analyses on a hardware level, any sound captured by all the connected microphones and filters out anything that is not a human voice. Paired with the automatic no-target functions makes it the perfect combination for flawless competitions.

A wide selection of accessory available can be connected to

expand the range possibilities. The internal chipcard reader slot is for usage without an operator, if paired with a range monitor (EP096M-RAS-RC page 8) the name of the shooter will automatically appear on the screen, moreover, if then connected to the Data Concentrator (EP096GM Page 7) his name will appear in the main office computer system, this allows also to be used for on-the-run registration competitions.

Its officially approved by the ISSF and FITASC federations, with all the latest finals and shoot offs programs. All the official Compak sporting/Inline schemes plus 10 more fully customizable programs with both Compak and Sporting shooter rotation.

The unit has two main version, standard and Wireless ready package, see the wireless section for more information.

- 60+ disciplines
- 15+ training programs
- Chipcard reader
- 15 trap machines output
- 8 microphone inputs
- 8 stand lamps output
- Shooting data ready
- Wireless functionality (optional)
- Oper. Temperature: -10°C/+45°C

Control units - Accessories

EP095M series



EP095MREF30/50

It's designed to grant access to the most used functions of the control unit like Start, Pause or No-Target and has a display that shows the current target by showing the active stand, target turn and shooter.

With the wired remote (30 or 50 mt) missed targets can be assigned by the referee, as well as selecting or throwing targets in training mode. It has an internal speaker for different sound cues to signal different status of the round, like no target, end of round, zeroes etc.

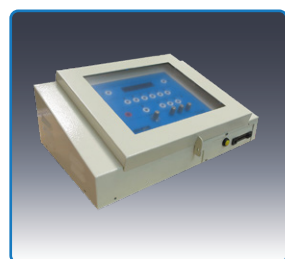


EP095MREFWIFI

This is the wireless version of the referee box with an internal circuit, that is paired with a battery powered remote that has a great distance of operation and can be used for days with a single 23A 12v. battery.

The wireless upgrade will also work with wired remote in parallel.

This circuit and remote can be also bought to upgrade existing wired referee boxes.



EP095M Cover

The EP095M-Cover is a Protection cover for the control unit.

It's made out of 2mm metal case and 5mm plexyglass. It is installed on top of the front panel to prevent access to the buttons.

It supports a typical key or combination lock keeping the control unit controls safe from tampering.



EP095 Pull-T

The Pull-T is a multifunction wired remote connected to the J5 connector (instead of the referee box).

It is specifically designed for manual target release of Sporting and Compak ranges, but it also works for Skeet and Double Trap.

It has 9 buttons, one for each machine (1 to 8) and a Start button.



It's a very simple, easy to install American Trap control unit with an exceptional sensitivity on the microphones thanks to the same "voice board" used for the much more complete EP095M control unit.

It is designed for an external coin mechanism (token or chip cards) and it can be connected to an interface for the referee as well as a wireless remote control for the target release.

It is a bundle that comes equipped with a set of 5 microphones (8 ohm) with blue LED, tripods, ready for connection and easy to connect set of cables.

It is powered at 12 volts from the ATM's battery and compatible with a variety of different brands of machines.

- **Input voltage 12v. Consumption 12W**
- **Output voltage 12/5 VDC 0.5A max**
- **Operating temperature: -10° - +45° C.**



RC-LCD-LO is a handheld mini control unit.

Powered by an integrated internal lithium battery that is charged via USB-C and can throw up to 40,000 targets with each charge.

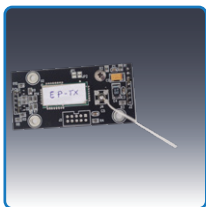
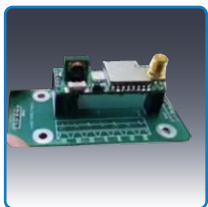
Several Radio transmitters can work close to each other and manage up to 45 ranges, with 8 machine each, reaching a distance of 500 mt.

Using the customizable sequence, the Autoplay mode allows for timed target release in case it's used alone.

It is compliance with regulations for radio frequencies of EU, USA and Canada.

In Charger mode, the unit can create and charge Chipcards and if connected via USB to a computer, it can interrogate via radio other Radio Transmitters and download reports. These reports will be uploaded directly into Multi-Pull to keep track of the consumed targets or rounds of the users at all times.

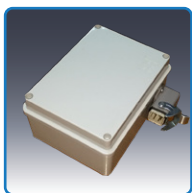
Our system can host a wide selection of wireless transmitters/receivers of different brands. For 1/2/8/15 machines, configurable in different frequencies depending on your region for maximum creativity in your shooting ground layouts.



Wireless module

The wireless module is installed on the main board of the control unit. Depending on the brand of the module, it will allow to pair its relative receiver or transmitter.

We are compatible with Elettronica Progetti, Elicio.es and Promatic wireless systems, below some examples of an ample selection available.



Elettronica Progetti

- EP095CR-1** Dry contact for 1 trap
- EP095CR-2** Dry contact for 2 traps
- EP095CR-8** Receiver for up to 8 traps



RT8GMS

Transmitter remote for 8 traps release for sporting, with voice activation delay
Compatible with Claymate 3



Promatic

- STX Receiver** Receiver for 1 trap
- RT2 STX** Transmitter Twin Channel
- DTL/ABT STX** Transmitter for Down the line



Single game trailer Radio

Transmitter remote for 8 traps release for sporting



Elicio.es

- microRC-LO-SC** Micro receiver for 1 trap
- RC-LO-1** Boxed receiver for 1 trap
- RC-LO-2** Boxed receiver for 8 traps
- RC-LO-8** Boxed receiver for 15 traps



RCL-08

Transmitter remote for 8 traps release

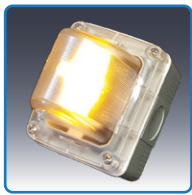


The EP096AT series is our customizable tripod for shooting stations. It is made of an iron galvanized sturdy support and chrome finishing for a pleasant appearance.

The possible options of customization are:

- station LED lamps or target displays
- no-Target button
- shooting Data interface
- strong industrial level water proof connectors
- fixing connector holder
- microphone cloth branded cover

Height: 80 cm
 Net Weight: 2,7 Kg
 Material: Chromed galvanized iron



Stand lamp

IP55 Transparent lamp holder, hosts a low consumption 12vdc LED light bulb. Long lasting light bulb life



EP096AF-Cover

Cloth branded cover. It's designed to repel water, environmental noise reduction and cross wind canceling for a clearer target call.



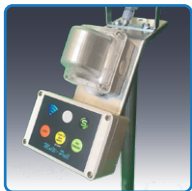
AD display

Metal cased display with 2 characters in a 7x5 LED matrix that shows the next target and info if it's a single, simultaneous or on report pair.



IP68 Male Connector

Powder painted waterproof metal industrial connector. Protects the connections and granting ease of installation of the tripod assembly.



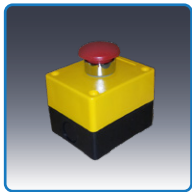
RF.I.D.

Beretta's "Shooting Data" interface. Mounted under the LED lamp, for Shooting Tags and send telemetry to the Beretta's gateway.



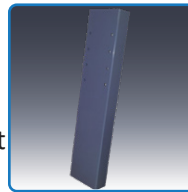
IP68 Fixed female Connector

Powder painted waterproof metal industrial connector with plastic cover with gasket. Protects the connections and granting ease of installation of the tripod assembly.



No-Target

Big industrial push button in an IP55 ABS case. For ease of access for the shooter to repeat last target



Turret

Powder painted metal turret for the fixed connector installations for shooting stands.



EP096AF-40

The EP096AF-40 microphone is a robust aluminum casing with very sensible 40 Ohm membrane (replaceable). With a very wide frequency response, it is ideal for high performance shooting training and competitions ranges.

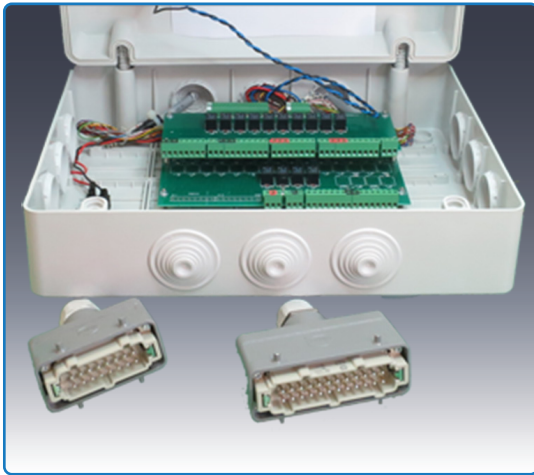
This microphone has been chosen for the last 5 Olympics and for countless World and National Championships and World Cups.



EP096AF-8

The EP096AF-8 microphone is an economic choice.

It has a metal cone and a membrane of 8ohm, less sensible in comparison with the EP096AF-40, but it makes a perfect choice for practice ranges or Sporting layouts



EP096I1

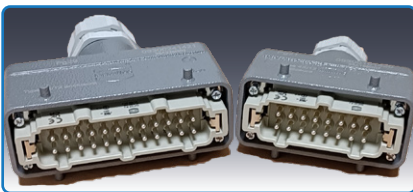
EP096I1 series are connection boxes specifically designed for combined ranges.

It is an IP55 box, with an electronic circuit that is responsible to switch microphones and machines for ranges that hosts different disciplines. It can be with different type of input and output solutions depending on the required function.

The main 24 and 16 pin, industrial heavy-duty connectors are responsible for carrying all the signals from and to the range. They are designed to be a flexible solution for many needs.

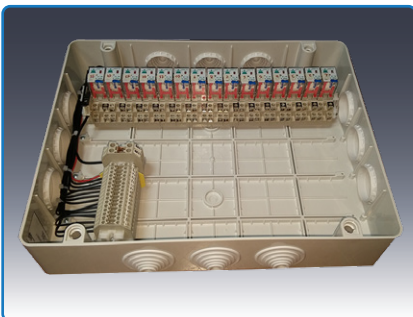
Here are the configurations available:

Trap / Skeet	Output	Switch	Trap / Skeet / Compak	Output	Switch
EP096I1-T/S-12-A	12volts	Automatic	EP096I1-T/S/C-12-A	12volts	Automatic
EP096I1-T/S-12-M	12volts	Manual	EP096I1-T/S/C-12-M	12volts	Manual
EP096I1-T/S-D-A	Dry contact	Automatic	EP096I1-T/S/C-D-A	Dry contact	Automatic
EP096I1-T/S-D-M	Dry contact	Manual	EP096I1-T/S/C-D-M	Dry contact	Manual



EP095M-Plugs

In case of a single discipline range, a pair of industrial heavy-duty connectors can be used to connect all the necessary microphones and machines, without the need of a junction box.

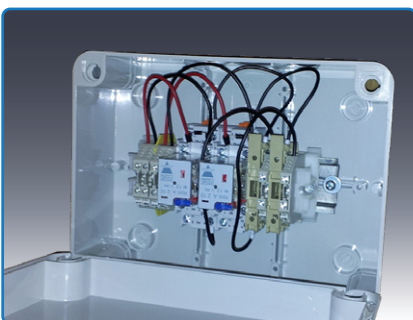


EP096I1-T-NJ

The EP096I1-T-NJ is a dedicated interface box for trap bunker machine triggering. It is installed directly in a Trap bunker and it's a IP55 box with 15 heavy-duty high-quality relays and protection fuse.

The relays can withstand currents up to 10 Amperes.

A line of high-quality terminal block, makes it easy to install and maintain.



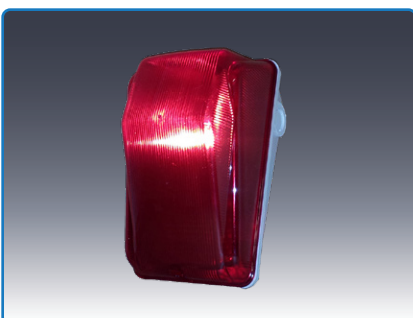
EP096I1R

The EP096I1R is a relay box for Skeet high house and low house.

It is bought in pairs and installed beside the skeet machine.

With an IP55 box, inside it has 2 heavy-duty high-quality relays with protection fuse to trigger the skeet machine and drive a 220v lamp.

The relays can withstand currents up to 10 Amperes.



SK-LAMP

The SK-LAMP is a water proof, red colored lamp holder.

It can host a commercial 220vac light bulb, with the standard E27 screw attachment.

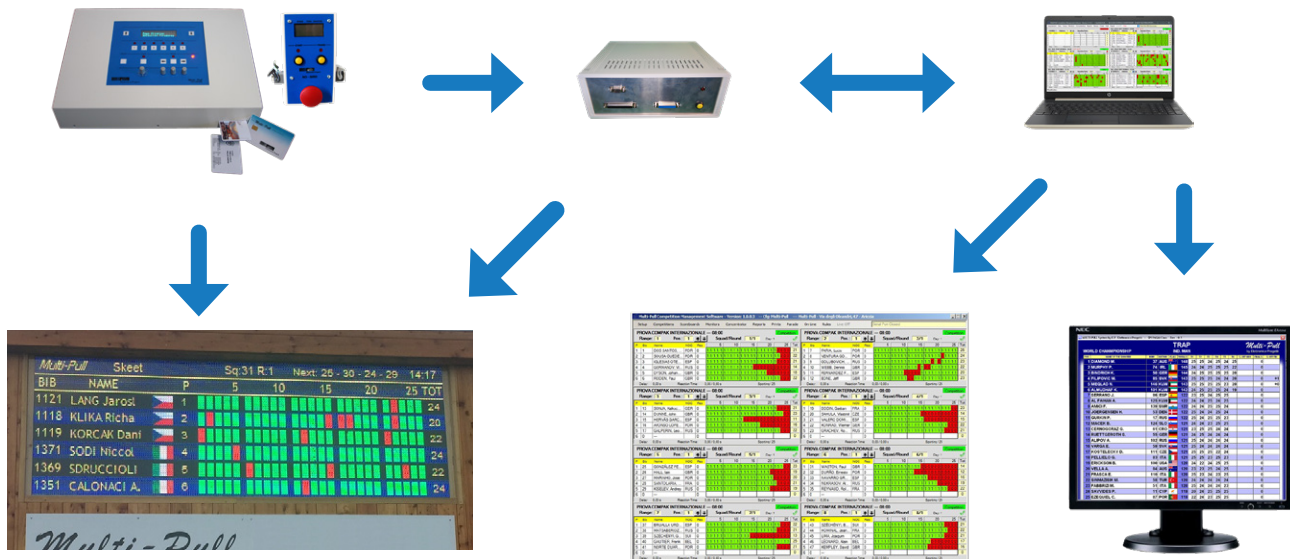
Easy to install and very durable.

Data management and control room

The control unit sends results both to data concentrator and scoreboard & range monitor

The data concentrator receives and stores all results from all the connected ranges

Multi-Pull competition software collects drives the Data Concentrator and generates the squads names and rankings

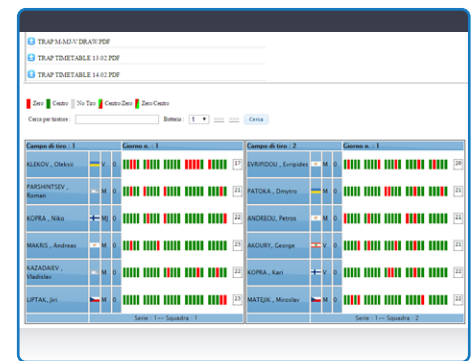
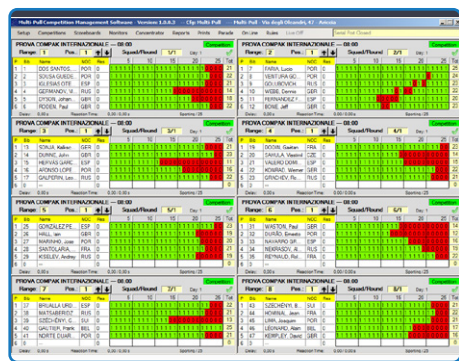


Scoreboards and range monitors presents the results and names received from the Control Unit and Data concentrator

All data of the competition is created within Multi-Pull. Offering real time overview of all the ranges, hardware monitoring and print outs

Ranking and results monitors for spectator areas

Multi-Pull competition management software



This our all-in-one software solution for your shooting range.

From hardware monitoring and control, to competition creation and management, up to sponsoring and advertisement on monitor and scoreboards, web result broadcasting, till printouts and victory ceremony management.

On the main screen, all ranges are shown for real time monitoring of what is happening, who is shooting on the ranges with names, hit and misses, results and classification in one spot.

It has a wizard competition creation dynamic form, guiding step by step the user in creating the perfect competition. Allowing to create many different kinds of classifications, the results engine is capable of granting full creativity also to keep track of the prizes to winners.

From the athletes entry lists, squadding, shooting order, all conveniently printable in a single menu.

Created competitions can be started and run with just few clicks.

With every license, a customized web page will be created, with shooting ground information, pictures, addresses. This page will also host all your competitions, where it can be uploaded both documents and real time results and classification and allow spectator from the whole world to keep track on their favorite athlete performances.

Full control over scoreboards, with the additional function called storyboard when paired with the EP099T full graphic scoreboards series. Manage your sponsors and spectator information by creating slideshows of pictures, videos, dynamic results and many more.

Integrated payment management engine, when using all our line of chipcard based system.

Comes in three license selection:

Full, only ISSF, only FITASC

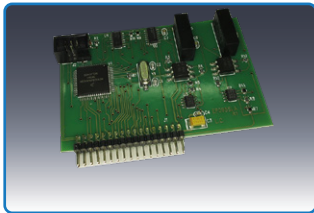


EP096GM

The “data concentrator” is the heart of the system. It’s an interface between the software and the hardware, it is responsible to store in its memory, results from all connected ranges, names of the shooters, prepared squads.

Control units on the range will send the start signal and results to it, and shot by shot with hit and misses, names from chipcards, all for the “data concentrator” to gather them, ready to be then read via USB from the Multi-pull software. Once a squad has been prepared on the Multi-pull software, either being temporary or competition, it will be send and stored in this device. When the round starts, the data concentrator will send these information to any connected display either being a results monitor, scoreboard or hall video interface.

It can host up to 8 wired ranges or many more wirelessly connected.

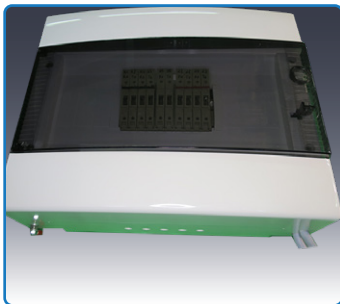


EP096GM-SLV

The EP096GM-SLV it is also names “slave card”. It is an expansion card, to be slotted into a data concentrator range lines. Every card is responsible to allow input and output wired connections, one for each range.

It is the communication interface to the external world.

Signal connection

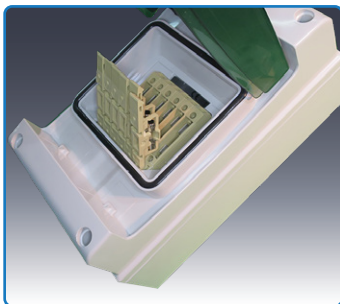


EP096GM-FUSE-3 /4/5/6/8

The data concentrator’s fuse box is a protection connection box.

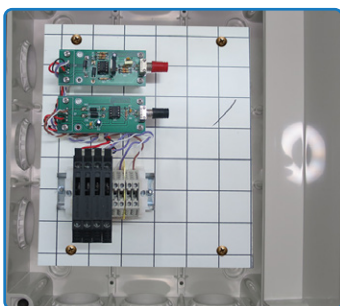
It consists in an ABS wall mounted enclosure, with pairs of fuse holder terminal blocks. All the cables for results and names from and to the ranges are connected to each fuse terminal block pairs, these connection lines are then protected against surges and lightning via Transil diodes and Gas dischargers, to prevent damage to the more sensitive equipment connected.

It is made specifically for each order, can be built in variants of 3, 4, 5, 6 and 8 ranges.



EP096I1-FP

This box is designed to gather all the data connections coming from and to the main office. With 3 pairs of terminal blocks, will allow to easily connect the control unit, scoreboard, monitor and data concentrator and protect the line from surges via a sensitive fuse, that will break in case of energy spikes, protecting the communication components of each device.



EP096I1-TX1-RX1

The EP096I1-TX1-RX1 is the range counterpart of the TX8-RX8 conversion box. It is a single pair of receiving and transmitting optical fiber conversion circuits, that convert the output serial RS485 signals into optical digital signal to cover great distances and offers great protection to devices from lightning and surges.

In this box all the range’s equipment will be connected to send or receive data from the main office.

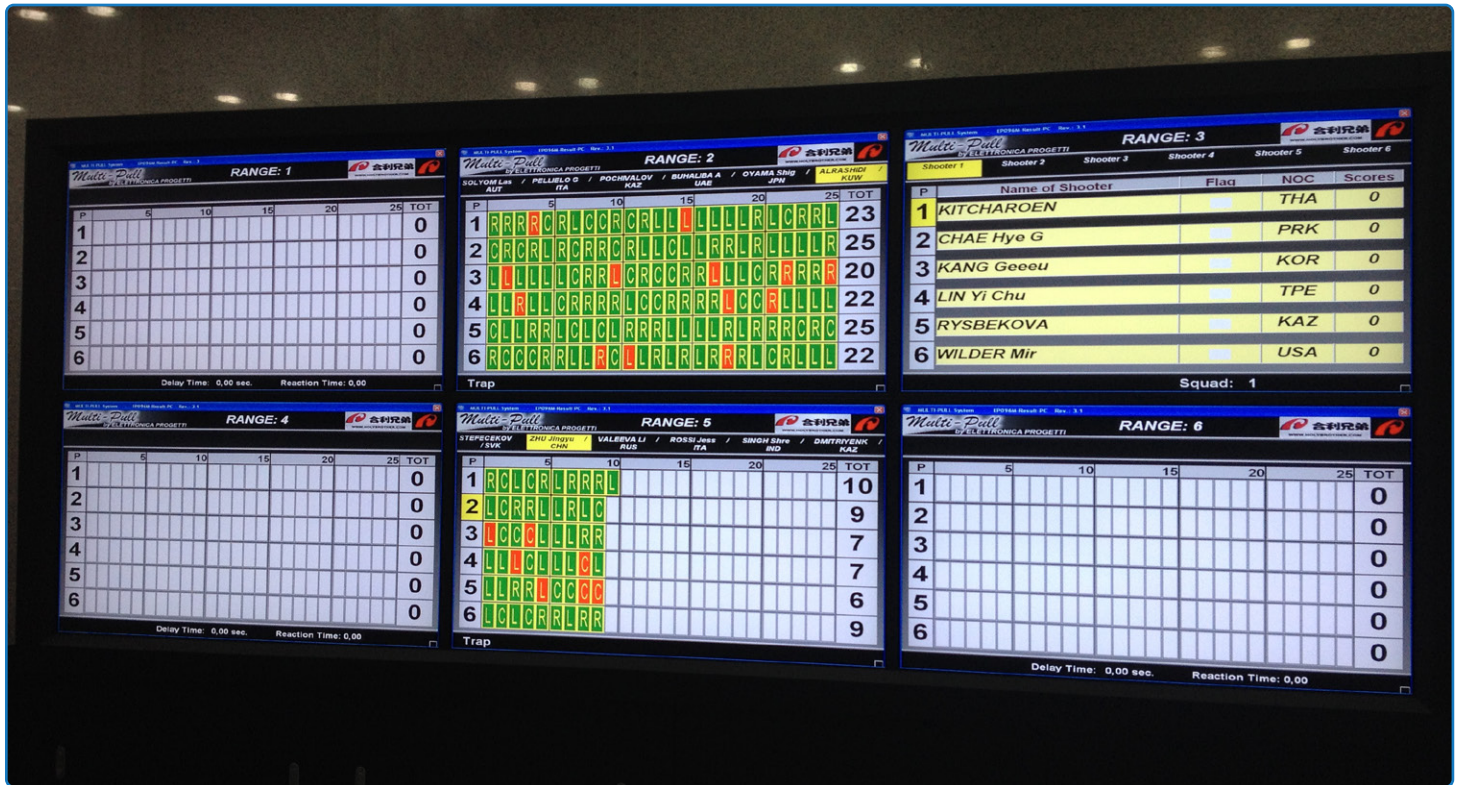


EP096I1-TX8-RX8

The EP096I1-TX8-RX8 is a wall mounted distribution and conversion box, installed in the main office where the data concentrator and multi-pull computer is placed.

It is responsible to convert the optical fiber signal back to serial RS485 protocol for the data concentrator.

It is made specifically for each order, can be equipped for 3, 4, 5, 6 and 8 set of receiving and transmitting converter pairs. One pair for each range.



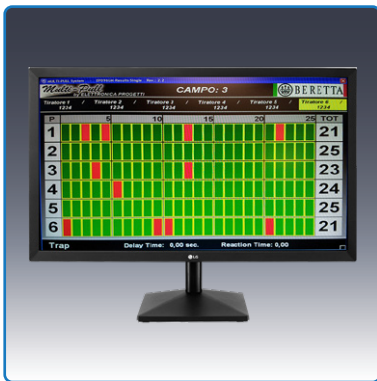
EP096M-RAS-RC

Our results monitor solution for single range results (see picture above).

A small metallic box, with a mini computer inside, HDMI output, serial connections, connection port for the Compak Inline plate and USB ports.

This device can be connected to PC monitors or big LCD televisions to show results, names, squad information, reaction time of each shooter on the range, all organized in a nice graphical output.

It is mostly used for showing results for the shooters and referee on the range or on bigger screens for spectators in the clubhouse.



EP096M-RAS-RS

Unlike the RAS-RC, the EP096M-RAS-RS is an interface to show results, squads, names, round of multiple ranges.

It is designed to be installed in public areas and give a real-time overview of the ranges that are connected to the data concentrator. It is composed a mini computer with HDMI output, serial connection and USB ports.

It allows to be user configurable to show up to 6 ranges in one screen.



EP096M-RAS-RK

This video interface is developed to host Classifications.

It is a smaller box than the RAS-RC and RS, with a small computer inside, HDMI output, LAN connection and USB ports.

It is designed to be connected to big screens in public areas and via LAN network, feed directly from the Multi-pull software, it can store multiple rankings.

From the Multi-pull software is possible to change aspects of scroll speed, advertisement, font size and many more options and of course, a set of rankings to be shown. Each will scroll and then pass to the next.





EP096AG2

The control unit has an integrated chip-card reader and this is an extension of it. It is a product that allows for the control unit to be stowed away, maintaining the ability for the shooters to book a round and start practicing.

It is designed for practice ranges, where there is no operator. Its plastic case will show the 6 LED for the booked shooters, a green LED when its active and a display for information of the inserted card with the name of the owner and how much credit he has left.



EP096AG3

Our chip-card programmer connects with via USB to a windows PC. The creation or charging of cards, as well as downloading reports of consumed rounds, balances and blocking of users is done via the Multi-Pull integrated chip-card functionalities.

The software has all these stored in its database and can be shared between multiple charging desks connected via network and the operation is simple and straight forward. It comes with the connection cable, power supply and the management software.



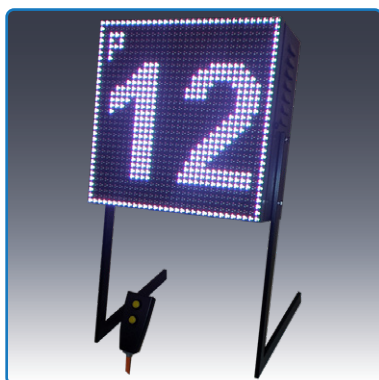
EP096AG4 /-P1S/-P2S

The EP096AG4 line is our chip-card for all our AGx payment systems lineup. It is a plastic card, with an embedded microchip that stores the user code that is then paired with the database and all info related. The service of printing of 1 side or 2 sides in both black/white or colored is available. Useful for sponsoring or advertisement and to brand the card with your shooting ground info and graphics.



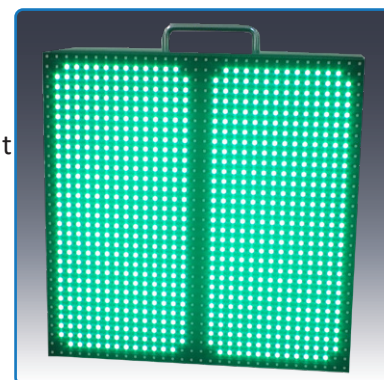
EP096AG5-W

Our automatic vending machine to recharge chip-cards is made of a sturdy metal safe case, with an internal money reader, optional with coin reader (ask if your currency is available), that will accept all our chip-cards and will offer the service of automatically charge chip-cards to club members without the need of people at the desk. Can be placed outside for convenience or hanged on the wall. It comes in 2 variants: LAN / USB reports (for reports via network) or wireless reporting (for RC-LCD-LO compatibility).



EP096AC-Timer

This is the timer for finals. It is made of a rain proof metal case, high luminosity LED matrix, with controls on the back panel and a 20mt remote cord. It also has the double function of luminous hit & miss flag for side referee. In the configuration menu flag for trap or skeet can be selected offering a nice improvement for spectators during important finals.



The EP098TBH series scoreboard is our Digital LED series of score displays, specifically designed for shotgun shooting disciplines.

Made of powder painted aluminum case, with an internal galvanized iron structure hosting a series of water-resistant high luminosity LED boards.

Each model has a fixed set of characters and numbers and they come in two main variants, qualification and final scoreboard. This kind of scoreboard are strong built with minimal operation required. Used in many countries, sold by the hundreds and the test of time has proven to be the most reliable choice for many customers.



EP098TBH 7 - 6 - 28

For qualification

Athlete position	1 (char.)
Hit&Miss	25 (char.)
Total	2 (char.)
Data interface	RS485 x1
Power cons	350 Watt
Dimensions	244x127x16 cm.
Weight	110 Kg
Oper. Temp.	-10°C - +45°C



EP098TBH 7 - 6 - 36

For qualification

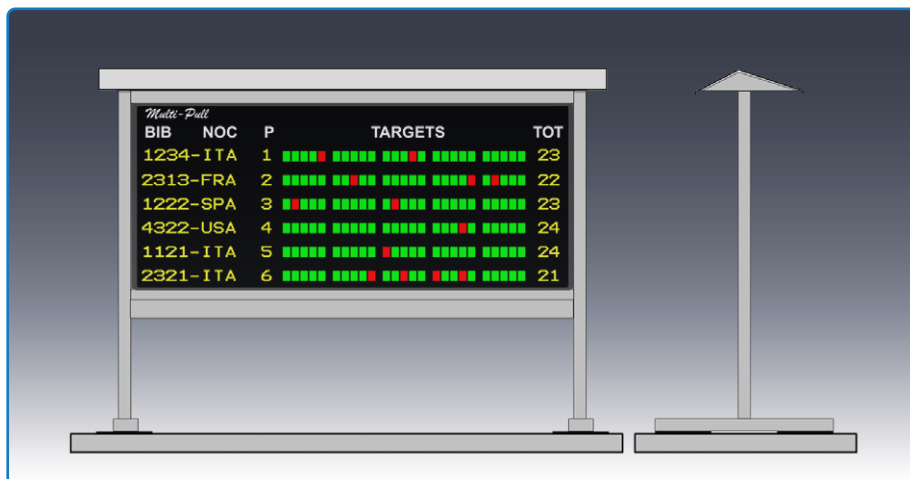
Name	8 (char.)
Athlete position	1 (char.)
Hit&Miss	25 (char.)
Total	2 (char.)
Data interface	RS485 x2
Power cons	550 Watt
Dimensions	331x127x16 cm.
Weight	150 Kg
Oper. Temp.	-10°C - +45°C



EP098TBH 7 - 6 - 54

For finals

BIB / NOC / QUA	12 (char.)
Name	12 (char.)
Athlete position	1 (char.)
Hit&Miss	25 (char.)
Total / Rank	3 (char.) / 1 (char.)
Data interface	RS485 x2
Power cons	850 Watt
Dimensions	470x145x16 cm.
Weight	270 Kg
Oper. Temp.	-10°C - +45°C



All scoreboards have the option of a sturdy metal frame bought separately.

This structure is designed to be easy to mount and it comes in two versions, fixed or wheeled.

It is shipped dismantled and can be quick to assemble with just a few bolts.

Both variants have a covering roof made of 2 mm thick iron, gray powder painted color.

The EP099T P10 series of Full graphic displays are the new generation of our line of scoreboards. Their graphic nature, is the perfect choice for ranges that are in need of a dynamic solution for their spectators.

With an RGB led matrix, it can show both results of the competition and presenting a numerous information like: events information, automatic ranking, sponsors, advertisement and much more, all conveniently and centrally controlled by the Multi-Pull competition software. The EP099T series comes in three different sizes.



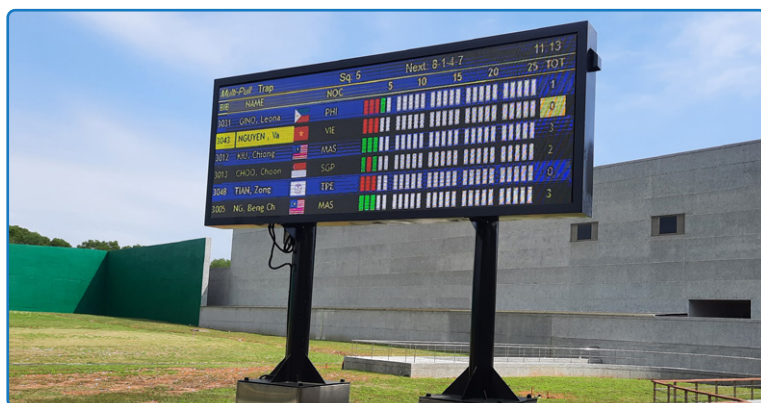
EP099T P10 256x128 For qualification

Resolution	256 x 128 pixels
Dot pitch	P10 (10mm between pixels)
N. Col / Luminosity	16 MIL / 5.500 cd/sq. mt.
Operating sys	Windows 10
Data interface	RS485 x2 + RJ45 LAN x1 + Wifi
Power cons	600/1500 (max) Watt
Dimensions	260x130x25 cm.
Weight	200 Kg
Oper. Temp.	-5°C - +45°C



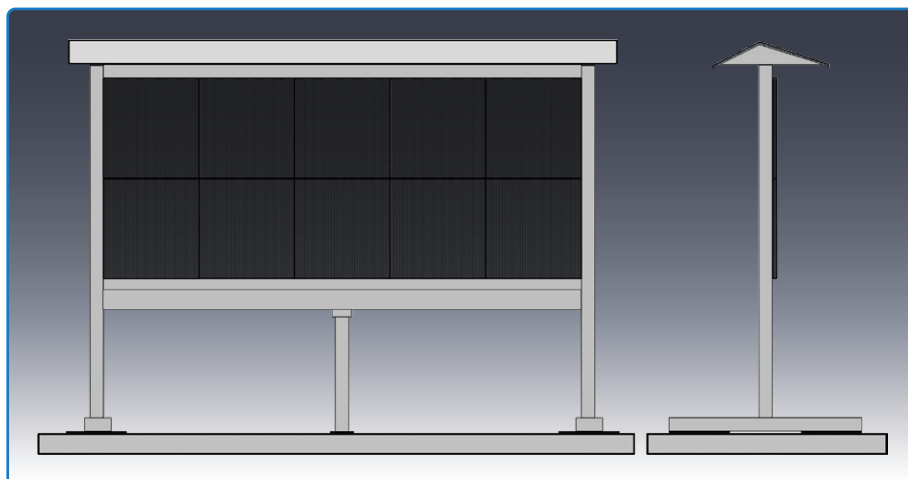
EP099T P10 384x128 For finals

Resolution	384 x 128 pixels
Dot pitch	P10 (10mm between pixels)
N. Col / Luminosity	16 MIL / 5.500 cd/sq. mt.
Operating sys	Windows 10
Data interface	RS485 x2 + RJ45 LAN x1 + Wifi
Power cons	800/1900 (max) Watt
Dimensions	390x130x25 cm.
Weight	350 Kg
Oper. Temp.	-5°C - +45°C



EP099T P10 480x192 For finals

Resolution	480 x 192 pixels
Dot pitch	P10 (10mm between pixels)
N. Col / Luminosity	16 MIL / 5.500 cd/sq. mt.
Operating sys	Windows 10
Data interface	RS485 x2 + RJ45 LAN x1 + Wifi
Power cons	2000/6000 (max) Watt
Dimensions	490x200x25 cm.
Weight	550 Kg
Oper. Temp.	-5°C - +45°C



All scoreboards have the option of a sturdy metal frame bought separately.

This structure is designed to be easy to mount and it comes in two versions, fixed or wheeled.

It is shipped dismantled and can be quick to assemble with just a few bolts.

Both variants have a covering roof made of 2 mm thick iron, gray powder painted color.

WHAT WE DO

Since 1984 we develop and build products and technology solutions for the management and complete automation of clay pigeon shooting ranges, with the Multi-Pull system.

It is our solution for your shooting range.

Providing for single training range, up to the international competition level multiple layout complexes.

We provide reliable products, flexible applications, using long lasting materials.

OUR GOAL

Help the **shooting ground owners** to simplify both the day to day usage as well as organizing important upcoming events with ease.

Make **shooters** feel comfortable, trusted and focused on training or competition, with precise and fast voice releases.

Inform the **spectators** with the highest precision possible with scoreboards, monitors, web results and printouts.

All this is achieved with a great team at the Rome production facility, and abroad with remote and onsite support of our technicians.

All our products are officially approved by the ISSF and FITASC federations for both training and competitions.

IN 2024 WE CELEBRATE 40 YEARS OF ACTIVITY



Electronica Progetti s.r.l.
Via Oros, snc
00071 Pomezia (RM)
Italy
VAT: IT16932081009

+39 06 9342 181

+39 06 9344 987

+39 334 700 0476

office@elettronicaprogetti.com

www.elettronicaprogetti.com

facebook.com/ElettronicaProgetti

Officially approved by



*Electronica Progetti
is part of Promatic group*



Technologic partners

